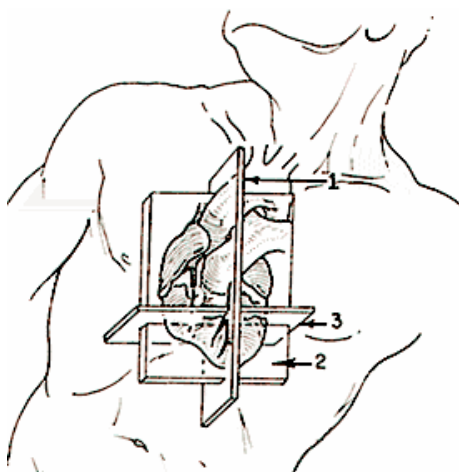


ACC Database

by Medical Dynamics



*Organized, Efficient STS
Registry
Recording*



Tested and Certified by the ACC:

The Medical Dynamics ACC Software has been fully tested and certified by the ACC. Medical Dynamics was one of the first ACC Certified Vendors. View Certification letter.

Report Cardiac Cath Outcomes:

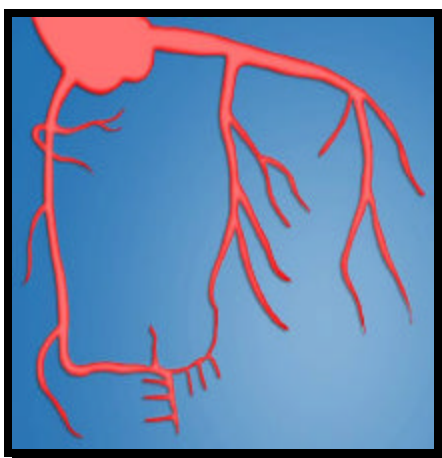
Continuous Quality Improvement, Cardiac Cath Outcomes Reporting and rigorous Quality Assurance Programs are more effective when based on the ACC Core Data Elements. With over 300 participating Hospitals, the ACC database provides unmatched outcomes comparisons.

Outcomes based on Clinical Risk Factors:

Hospital claims based outcome reporting often does not consider crucial Clinical Risk Factors. The ACC Database provides hard information on which claims information can be substantiated. This provides a true picture of Clinical Outcomes Results. For benchmarking, hospitals receive reports contrasting their results with the local Geographic Region as well as the Nation at Large. Medical Dynamics ACC software enables a comprehensive suite of internal reports that yield historical and up to the minute information for monitoring and reporting purposes.

Data Harvest to the ACC data center in Maryland:

Four times a year, the Medical Dynamics ACC Database data is forwarded to the ACC in Maryland. There the data is placed in the ACC Data Warehouse. The ACC then develops institution-specific reports providing feedback on data quality and analysis of the Hospitals Cardiac Cath outcomes in comparison to national and regional averages. Before being sent to the ACC, the data is extensively checked and cross-checked by the Medical Dynamics ACC Export software to assure correct data.



Benefits using Medical Dynamics ACC Software and ACC Participation:

- National and Regional benchmark comparisons
- Medical Dynamics keeps you current. All ACC changes are rapidly put in place.
- Medical Dynamics is COST effective.
- Your ACC can be a simple standalone to a multi-user multi-hospital system.
- Your data can be harvested from other sources (Information Systems, etc.)
- Your data can be sent to other sources using Medical Dynamics Proprietary Data Distributor.
- HL7 Hospital IS connections available.
- Over 250 User Defined fields add a custom touch to your ACC
- Unlimited reporting system.
- Uses Microsoft standard products (SQL, Access, Word, Excel, etc.)
- Can work with Oracle and Microsoft SQL data warehouses.
- Encrypted databases available.
- Email support from within programs.
- Onsite ACC specialist
- Medical Dynamics focuses on ACC and STS data collection initiatives.
- Analyze the care continuum of care in your cardiac cath patients
- Your Hospital is identified with a national quality improvement program
- Quality improvement effort results are documented
- Demonstrate quality of care to Third Parties
- Immediate and accurate response to request for outcome data
- Potential areas for improvement are identified
- Practice patterns are documented
- Cross-match and rationalize cost containment data with clinical outcome data
- Medical Dynamics ACC permits “real-time” analysis of outcomes without waiting for Harvest Reports

Effortless Data Entry:

Organized along the lines of the form recommended by the ACC, each field is easy to understand and provides a clear presentation of what is required.

Reports

Using common products like Microsoft Access, Crystal Reports or a visit to Medical Dynamics Advanced Report Generation classes will provide you with virtually unlimited reporting capability. We realize many prefer using the comprehensive set of canned reports furnished with the standard offering. Some of the reports available are:

Some Reports

1. Mortality
2. Mean Age
3. Gender
4. Weight Distribution
5. Diabetes Presentation
6. Pre-Procedure Cardiac Status
7. Chronic Lung Disease Presentation
8. Peripheral Vascular Disease presentation
9. Cerebrovascular Disease Presentation
10. Cerebrovascular Accident
11. Renal Failure
12. Previous Cardiac Interventions
13. Procedure Status (Emergent or Salvage)
14. Pre-Procedure Status MI
15. Pre-Procedure Status MI 0-7 Days Prior
16. Pre-Procedure IABP Usage
17. Triple Vessel Disease from Cath Data
18. > 50% Stenosis in Left Main
19. Ejection Fraction < 40%

Menu Selections for frequently used items:

Data entry for frequently used selections is made easy by pull down menus. Each of these can be edited at anytime adding a great deal of flexibility and control.

- Referring Cardiologist
- Referring Physician
- Payor
- Hospital
- Operative Surgeon



Hospital:	ST. FRANCIS, BI
Payor:	Hospital Name
Day Elective Admit	Duke University Medical Center
Date of Admission:	Grand Strand Medical Center
	Richland Memorial Hospital

Medical Dynamics ACC Software can report on all ACC Data Elements:

Every single field in the ACC core data elements can be reported on, compared against or analyzed using Reporting tools contained in the ACC Software application. If the large number of furnished reports does not fully cover your exact needs, the data can be fully analyzed using custom reports in Microsoft Access or Crystal Reports. Some of our larger Hospital groups bring together ACC core data elements from several of their member Hospitals and analyze outcomes within the group. The Medical Dynamics ACC Database provides unlimited flexibility in outcomes reporting.

Extended or "Custom" Fields:

For local outcomes, the Medical Dynamics ACC Database provides up to 255 user defined custom fields. Each patient encounter can have a complete set of custom data points collected. These can then be reported along with the ACC Core data elements. These extra fields are standard, not optional, with the Medical Dynamics ACC Database.

Interfacing:

Medical Dynamics has long been a leader in interfacing to clinical instruments and Hospital systems. A most valuable interface is to the Hospital HL7 ADT (used for Admission date, demographics, discharge date, social security number and other information). Medical Dynamics also has standard interfaces to instruments used to collect ACC core data elements.

20. Mortality by Age
21. Mortality by Gender
22. Mortality presentation status
23. Mortality by Incidence
24. Complications, any major
25. Total length of stay
26. Total length of stay by MD
27. Post procedure length of stay
28. Length of stay under 6 days
29. Length of stay over 2 weeks
30. Same day elective admissions
31. BSA presentations
32. Morbid obesity
33. Hypertension
34. Hypercholesterolemia
35. History of CAD
36. Smoking history
37. Chronic Lung disease
38. Congestive Heart failure
39. NYHA Classification breakdown
40. Peripheral Vascular Disease
41. Cerebrovascular disease
42. CVA
43. Renal Failure
44. Immunosuppressive Treatment
45. Previous Cardiac Surgery
46. Previous PTCA/Athrectomy
47. MI
48. Thrombolysis
49. Cardiogenic Shock
50. IABP
51. Resuscitation
52. Angina
53. Arrhythmia
54. Meds: Aspirin
55. Meds: Anti-Coagulant
56. Meds: Digitalis
57. Meds: Beta Blockers
58. Meds: Nitrates
59. Meds: Diuretics
60. Meds: Intropics
61. Meds: Steroids
62. Number of Diseased Vessels
63. Left Main Disease
64. Ejection Fraction
65. Pulmonary Hypertension
66. Aortic Stenosis
67. Mitral Insufficiency
68. In-Hospital Mortality
69. Overall Complications

These interfaces are in the instrument vendor format eliminating custom programming cost by vendors and IS staff. Some of the standard interfaces are with GE, Witt Biomedical, Mennen Instruments, Camtronics, Quinton Instruments, Midas and Siemens as well as many others. The Medical Dynamics interfaces are unique in that they account for multiple patient procedures during the same hospital stay. This is crucial in preventing duplicate admission counts on outcomes reports.

Data Migration Tools:

Tools currently exist for moving legacy ACC data into the proper ACC Core Data Element fields and interpreting the proper format for the data. This would be of interest to Hospitals and Surgeons that used the Summit Medical System ACC database a few years back.

Training:

Training can be arranged either on-site or at our training facility in Charleston, South Carolina. The Charleston training is held regularly and covers the basic ACC data management as well as extensive custom reporting and query making. This historic and very popular port city has proven to be an excellent environment for acquiring basic and advanced data management skills.

Implementation:

Software performs best when properly implemented. Medical Dynamics offers on-site specialist to assist in setting up and maintaining a successful data collection and data entry program. This service is available at anytime.

Support:

For over 16 years Medical Dynamics has been known for their quality support. Standard support hours are 8:00 am to 6:00 pm Eastern time. Support 24 hours a day and 7 days a week including holidays is available if needed. Support is normally by telephone or Email. Every site is provided with program enhancements that enable remote dial in assistance and upgrade services. This remote dial-in access sets up a "one on one" support environment for your users. Often, basic training can be furnished or enhanced by the dial-in facility. On-site support is arranged as needed.

- 70. Pulmonary Complications
- 71. Renal Failure Complications
- 72. Vascular Complications
- 73. Other Complications
- 74. Short Stay < 6 days
- 75. Long Stay > 6 days

See the Medical Dynamics web sites (meddyn.com or medical-dynamics.net) for more advanced report descriptions.

Easy to Buy:

The base ACC system can be operational in one day. Checks and cross checks assure quality data goes in from day one. Medical Dynamics has a number of different purchase plans available. Plans are available that provide a fully certified ACC system for no initial software cost. The purchase of the system can be integrated into a long term support plan. Everything considered, there isn't a better ACC package available.

How does it work?

Several methods for data collection and input are used. The most common is direct key entry into a dedicated computer of all the ACC data points. Another very popular method is having the Hospital IS department send demographic and discharge information by network to the ACC database. This would include demographics, complications during Hospital stay, discharge date and mortality information. This information can be "Cross-Loaded" using the Medical Dynamics "Data Distributor". On the same topic, data points can also be populated directly from Cath Lab hemodynamic monitors. Medical Dynamics makes it easy to create and use a well rounded ACC data collection system. A lot of the effort is handled automatically.

c. Medical Dynamics, 2003

Medical Dynamics

800 Meddyn Circle

Leesville, SC 29070

(800) 456 9577

(803) 532 9577

(803) 532 2935 (fax)

www.meddyn.com

www.medical-dynamics.net